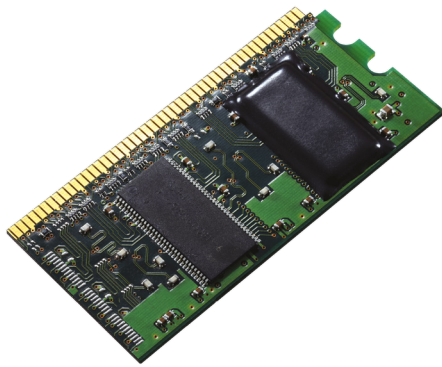


Torokeru Sealing Sheet (T-sheet)

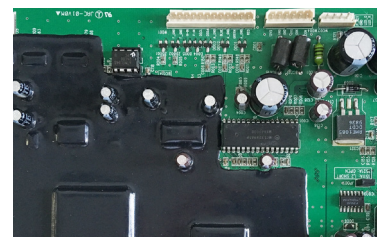
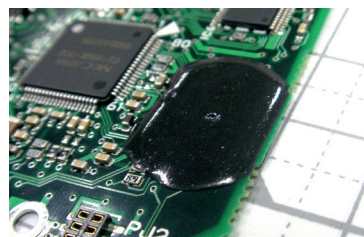
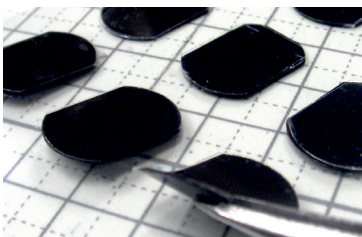


APPLICATIONS

- ▶ Protection of electronic components against water, oil, and other chemicals as well as metallic contamination
- ▶ Blinding of electronic components

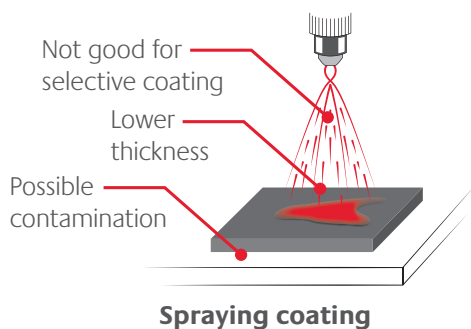
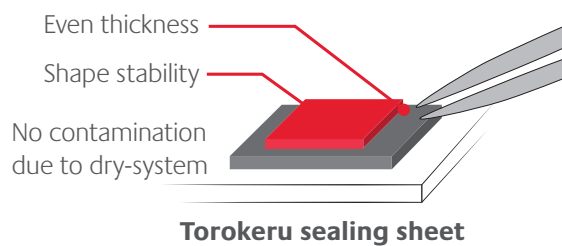
FEATURES

- ▶ Partial coating of electronic components on a PCB without any masking process
- ▶ Low temperature and pressure-less curing of the sealing sheet
- ▶ Mechanical enforcement



Advantages

- ▶ **Good adhesion strength** to several kinds of metal like SUS, aluminium, and steel as well as solder resist
- ▶ **Good electric insulation performance**
- ▶ **Stable against chemicals**, e.g. ATF oil
- ▶ **Good electric reliability under high temperature**
- ▶ **Prevention of electric leakage caused by metallic contamination**



Cross section of sealed part

